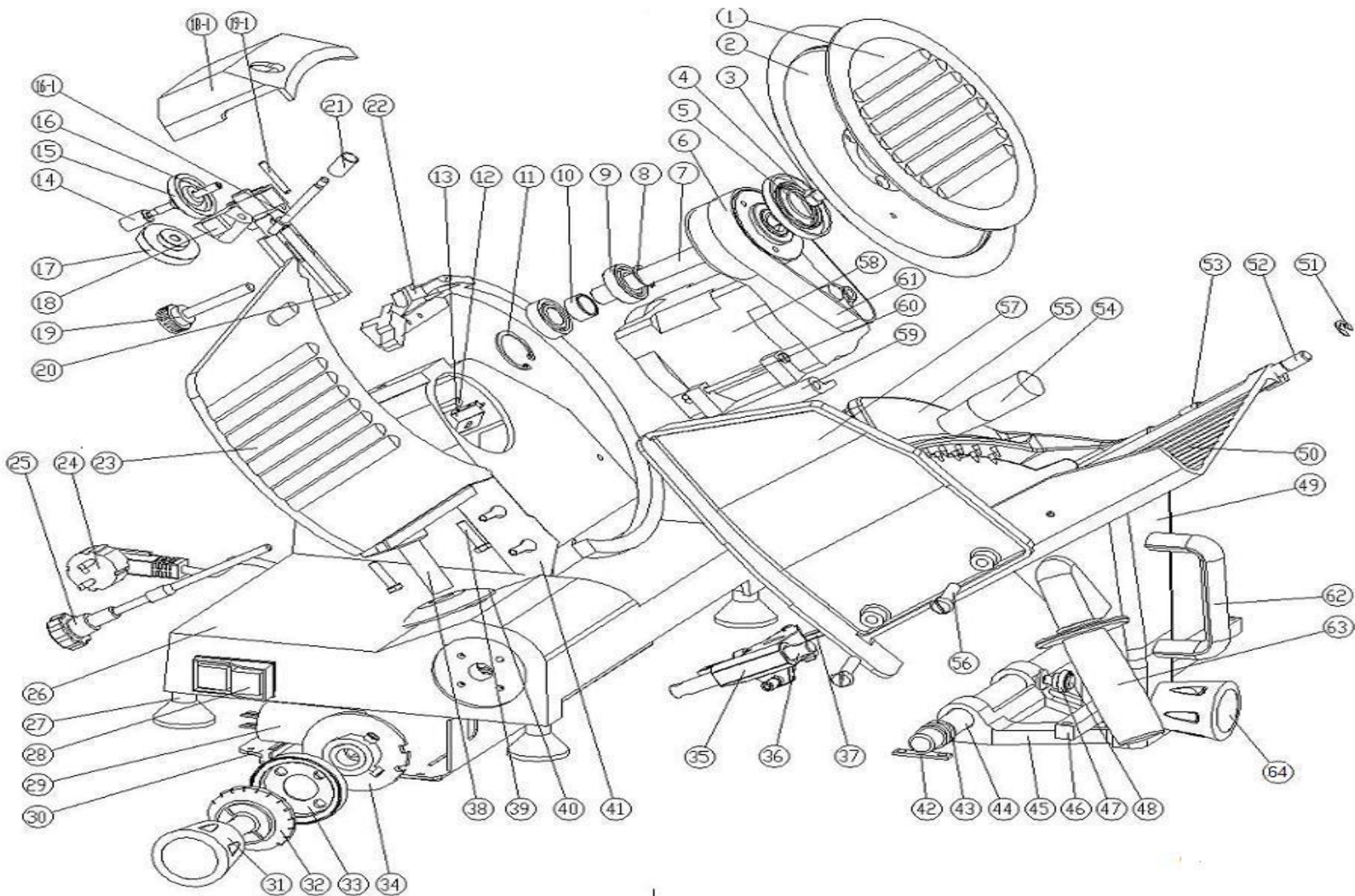


# Exploded View for meat slicer HBS-195JS/220JS/220A/250A/275A/300A/250/275/300/250L/300L



## PARTS COST: FOB SHANGHAI IN USD

| Part No | Part Name                            | HBS-195JS | HBS-220JS | HBS-250 | HBS-275 | HBS-300 | HBS-220A | HBS-250A | HBS-275A | HBS-300A | HBS-250L | HBS-275L | HBS-300L |
|---------|--------------------------------------|-----------|-----------|---------|---------|---------|----------|----------|----------|----------|----------|----------|----------|
| 1       | Blade protection plate               | 8.40      | 10.20     | 11.00   | 13.80   | 13.80   | 10.20    | 11.00    | 13.80    | 13.80    | 11.00    | 13.80    | 13.80    |
| 2       | Blade                                | 12.00     | 15.00     | 21.00   | 27.00   | 35.00   | 15.00    | 21.00    | 27.00    | 35.00    | 21.00    | 27.00    | 35.00    |
| 3       | Screw for blade                      | 0.00      | 0.00      | 0.00    | 0.00    | 0.00    | 0.00     | 0.00     | 0.00     | 0.00     | 0.00     | 0.00     | 0.00     |
| 4       | sealing ring for blade shaft         | 0.60      | 0.60      | 0.70    | 0.80    | 0.80    | 0.60     | 0.70     | 0.80     | 0.80     | 0.70     | 0.80     | 0.80     |
| 5       | sealing ring for blade spindle       | 0.10      | 0.10      | 0.10    | 0.10    | 0.10    | 0.10     | 0.10     | 0.10     | 0.10     | 0.10     | 0.10     | 0.10     |
| 6       | Sleeve of blade                      | 3.50      | 3.50      | 4.20    | 4.90    | 4.90    | 3.50     | 4.20     | 4.90     | 4.90     | 4.20     | 4.90     | 4.90     |
| 7       | Spindle of blade                     | 5.20      | 5.20      | 5.70    | 6.70    | 6.70    | 5.20     | 5.70     | 6.70     | 6.70     | 5.70     | 6.70     | 6.70     |
| 8       | Blocking ring for bearing            | 0.10      | 0.10      | 0.10    | 0.10    | 0.10    | 0.10     | 0.10     | 0.10     | 0.10     | 0.10     | 0.10     | 0.10     |
| 9       | Bearing                              | 1.80      | 1.80      | 1.80    | 2.10    | 2.10    | 1.80     | 1.80     | 2.10     | 2.10     | 1.80     | 2.10     | 2.10     |
| 10      | Isolating sleeve                     | 0.20      | 0.20      | 0.20    | 0.20    | 0.20    | 0.20     | 0.20     | 0.20     | 0.20     | 0.20     | 0.20     | 0.20     |
| 11      | Blocking ring for hole               | 0.10      | 0.10      | 0.10    | 0.10    | 0.10    | 0.10     | 0.10     | 0.10     | 0.10     | 0.10     | 0.10     | 0.10     |
| 12      | Microswitch                          | 0.70      | 0.70      | 0.70    | 0.70    | 0.70    | 0.70     | 0.70     | 0.70     | 0.70     | 0.70     | 0.70     | 0.70     |
| 13      | bracket for microswitch              | 0.20      | 0.20      | 0.20    | 0.20    | 0.20    | 0.20     | 0.20     | 0.20     | 0.20     | 0.20     | 0.20     | 0.20     |
| 14      | Button for sharpening stone          | 0.50      | 0.50      | 0.50    | 0.50    | 0.50    | 0.50     | 0.50     | 0.50     | 0.50     | 0.50     | 0.50     | 0.50     |
| 15      | sharpening stone                     | 0.60      | 0.60      | 0.60    | 0.60    | 0.60    | 0.60     | 0.60     | 0.60     | 0.60     | 0.60     | 0.60     | 0.60     |
| 16      | axis of sharpening stone             | 0.80      | 0.80      | 0.80    | 0.80    | 0.80    | 0.80     | 0.80     | 0.80     | 0.80     | 0.80     | 0.80     | 0.80     |
| (16-1)  | axis of trim stone                   | 0.80      | 0.80      | 0.80    | 0.80    | 0.80    | 0.80     | 0.80     | 0.80     | 0.80     | 0.80     | 0.80     | 0.80     |
| 17      | trim stone                           | 0.60      | 0.60      | 0.60    | 0.60    | 0.60    | 0.60     | 0.60     | 0.60     | 0.60     | 0.60     | 0.60     | 0.60     |
| 18      | stand of stone                       | 0.70      | 0.70      | 0.70    | 0.70    | 0.70    | 0.70     | 0.70     | 0.70     | 0.70     | 0.70     | 0.70     | 0.70     |
| (18-1)  | cover                                | 3.60      | 3.60      | 3.60    | 3.60    | 3.60    | 3.60     | 3.60     | 3.60     | 3.60     | 3.60     | 3.60     | 3.60     |
| 19      | handlebar                            | 0.60      | 0.60      | 0.60    | 0.60    | 0.60    | 0.60     | 0.60     | 0.60     | 0.60     | 0.60     | 0.60     | 0.60     |
| 20      | stand of sharpner                    | 1.40      | 1.40      | 1.40    | 1.40    | 1.40    | 1.40     | 1.40     | 1.40     | 1.40     | 1.40     | 1.40     | 1.40     |
| 21      | button for trim stone                | 0.30      | 0.30      | 0.30    | 0.30    | 0.30    | 0.30     | 0.30     | 0.30     | 0.30     | 0.30     | 0.30     | 0.30     |
| 22      | blade protection ring(include screw) | 3.30      | 3.70      | 3.70    | 5.00    | 5.50    | 3.70     | 3.70     | 5.00     | 5.50     | 3.70     | 5.50     | 5.50     |
| 23      | locring plate                        | 11.40     | 12.70     | 14.60   | 18.70   | 18.70   | 12.70    | 14.60    | 21.10    | 21.10    | 14.60    | 18.70    | 18.70    |
| 24      | wire and plug                        | 2.20      | 2.20      | 2.20    | 2.20    | 2.20    | 2.20     | 2.20     | 2.20     | 2.20     | 2.20     | 2.20     | 2.20     |
| 25      | pole                                 | 1.90      | 1.90      | 2.00    | 2.30    | 2.30    | 2.00     | 2.00     | 2.30     | 2.30     | 2.00     | 2.30     | 2.30     |
| 26      | body                                 | 42.30     | 42.30     | 50.40   | 57.70   | 57.70   | 26.00    | 26.00    | 37.10    | 37.10    | 50.40    | 57.70    | 57.70    |
| 27      | feet                                 | 0.40      | 0.40      | 0.40    | 0.60    | 0.60    | 0.40     | 0.40     | 0.60     | 0.60     | 1.10     | 1.10     | 1.10     |
| 28      | switch                               | 5.00      | 5.00      | 5.00    | 5.00    | 5.00    | 5.00     | 5.00     | 5.00     | 5.00     | 5.00     | 5.00     | 5.00     |
| 29      | capacitor                            | 3.10      | 3.10      | 3.10    | 3.10    | 3.10    | 3.10     | 3.10     | 3.10     | 3.10     | 3.10     | 3.10     | 3.10     |
| 30      | bottom                               | 2.40      | 2.40      | 2.70    | 3.40    | 3.40    | 2.70     | 2.70     | 3.40     | 3.40     | 2.70     | 3.40     | 3.40     |
| 31      | Adjusting handlebar                  | 3.60      | 3.60      | 3.60    | 4.70    | 4.70    | 3.60     | 3.60     | 4.70     | 4.70     | 8.70     | 9.70     | 9.70     |
| 32      | digital ring plate                   | 0.40      | 0.40      | 0.40    | 0.50    | 0.50    | 0.40     | 0.40     | 0.50     | 0.50     | 1.50     | 1.50     | 1.50     |

|    |  |       |       |       |       |       |       |       |       |       |       |       |       |
|----|--|-------|-------|-------|-------|-------|-------|-------|-------|-------|-------|-------|-------|
| 33 | digital ring   | 0.30  | 0.30  | 0.30  | 0.30  | 0.30  | 0.30  | 0.30  | 0.30  | 0.30  | /     | /     | /     |
| 34 | cam  | 2.00  | 2.00  | 2.00  | 2.30  | 2.30  | 2.00  | 2.00  | 2.30  | 2.30  | 2.00  | 2.30  | 2.30  |
| 35 | slide holder   | 2.30  | 2.30  | 2.40  | 3.00  | 3.00  | 2.40  | 2.40  | 3.00  | 3.00  | 2.40  | 3.00  | 3.00  |
| 36 | slide axis   | 1.00  | 1.00  | 1.10  | 1.30  | 1.30  | 1.00  | 1.10  | 1.30  | 1.30  | 1.10  | 1.30  | 1.30  |
| 37 | Axis for slide holder                                    | 0.10  | 0.10  | 0.10  | 0.10  | 0.10  | 0.10  | 0.10  | 0.10  | 0.10  | 0.10  | 0.10  | 0.10  |
| 38 | holder for locring plate                                 | 3.40  | 3.40  | 3.90  | 4.40  | 4.40  | 3.40  | 3.90  | 4.40  | 4.40  | 3.90  | 4.40  | 4.40  |
| 39 | locking nut for locring plate                            | 0.10  | 0.10  | 0.10  | 0.10  | 0.10  | 0.10  | 0.10  | 0.10  | 0.10  | 0.10  | 0.10  | 0.10  |
| 40 | sealing ring for locring plate                           | 0.20  | 0.20  | 0.20  | 0.20  | 0.20  | 0.20  | 0.20  | 0.20  | 0.20  | 0.20  | 0.20  | 0.20  |
| 41 | scraping board   | 0.40  | 0.40  | 0.40  | 0.50  | 0.50  | 0.40  | 0.40  | 0.50  | 0.50  | 0.40  | 0.50  | 0.50  |
| 42 | locring board for circle orbit                           | 0.00  | 0.00  | 0.00  | 0.00  | 0.00  | 0.00  | 0.00  | 0.00  | 0.00  | 0.00  | 0.00  | 0.00  |
| 43 | spring for circle orbit                                  | 0.30  | 0.30  | 0.30  | 0.40  | 0.40  | 0.30  | 0.30  | 0.40  | 0.40  | 0.30  | 0.40  | 0.40  |
| 44 | circle orbit   | 3.20  | 3.20  | 3.40  | 4.10  | 4.10  | 3.20  | 3.40  | 4.10  | 4.10  | 3.40  | 4.10  | 4.10  |
| 45 | sliding frame  | 4.10  | 4.10  | 4.10  | 4.70  | 4.70  | 4.10  | 4.10  | 4.70  | 4.70  | 4.10  | 4.70  | 4.70  |
| 46 | square orbit   | 1.80  | 1.80  | 2.10  | 2.40  | 2.40  | 1.80  | 2.10  | 2.40  | 2.40  | 2.10  | 2.40  | 2.40  |
| 47 | Spherical Bearings                                       | 0.90  | 0.90  | 0.90  | 1.20  | 1.20  | 0.90  | 0.90  | 1.20  | 1.20  | 0.90  | 1.20  | 1.20  |
| 48 | Axis for sliding frame                                   | 0.50  | 0.50  | 0.50  | 0.60  | 0.60  | 0.50  | 0.50  | 0.60  | 0.60  | 0.50  | 0.60  | 0.60  |
| 49 | carriage stand   | 5.20  | 5.20  | 6.00  | 7.30  | 7.30  | 5.70  | 6.00  | 7.30  | 7.30  | 6.00  | 7.30  | 7.30  |
| 50 | carriage   | 5.70  | 6.30  | 7.30  | 8.50  | 8.50  | 6.30  | 7.30  | 8.50  | 8.50  | 7.30  | 8.50  | 8.50  |
| 51 | Circlip  | 0.00  | 0.00  | 0.00  | 0.00  | 0.00  | 0.00  | 0.00  | 0.00  | 0.00  | 0.00  | 0.00  | 0.00  |
| 52 | pole for carriage  | 1.00  | 1.00  | 1.20  | 1.80  | 1.80  | 1.10  | 1.20  | 1.80  | 1.80  | 1.20  | 1.80  | 1.80  |
| 53 | bearing for pole of carriage                             | 0.40  | 0.40  | 0.40  | 0.40  | 0.40  | 0.40  | 0.40  | 0.40  | 0.40  | 0.40  | 0.40  | 0.40  |
| 54 | handle of pressor  | 0.90  | 0.90  | 0.90  | 1.10  | 1.10  | 0.90  | 0.90  | 1.10  | 1.10  | 1.80  | 1.80  | 1.80  |
| 55 | pressor  | 3.80  | 4.40  | 5.00  | 6.20  | 6.20  | 5.00  | 5.00  | 6.20  | 6.20  | 5.00  | 6.20  | 6.20  |
| 56 | French countersunk head screw                            | 0.20  | 0.20  | 0.20  | 0.30  | 0.30  | 0.20  | 0.20  | 0.30  | 0.30  | 0.20  | 0.30  | 0.30  |
| 57 | protection board (includes screw)                        | 2.40  | 2.40  | 2.90  | 3.40  | 3.40  | 2.40  | 2.90  | 3.40  | 3.40  | 2.90  | 3.40  | 3.40  |
| 58 | motor  | 27.00 | 27.00 | 33.50 | 38.40 | 38.40 | 28.90 | 33.50 | 38.40 | 38.40 | 33.50 | 38.40 | 38.40 |
| 59 | bracket for motor  | 0.30  | 0.30  | 0.30  | 0.50  | 0.50  | 0.30  | 0.30  | 0.50  | 0.50  | 0.30  | 0.50  | 0.50  |
| 60 | Hinge axis   | 0.00  | 0.00  | 0.00  | 0.00  | 0.00  | 0.00  | 0.00  | 0.00  | 0.00  | 0.00  | 0.00  | 0.00  |
| 61 | belt   | 1.40  | 1.40  | 1.40  | 1.50  | 1.50  | 1.40  | 1.40  | 1.50  | 1.50  | 1.40  | 1.50  | 1.50  |
| 62 | U type handle  | /     | /     | 1.60  | 1.60  | 1.60  | 1.60  | 1.60  | 1.60  | 1.60  | /     | /     | /     |
| 63 | round handle   | 1.10  | 1.10  | 1.10  | 1.30  | 1.30  | 1.10  | 1.10  | 1.30  | 1.30  | 8.70  | 9.70  | 9.70  |
| 64 | Aluminum handle ( only for HBS-250L,HBS-275L & HBS-300L) | /     | /     | /     | /     | /     | /     | /     | /     | /     | 3.10  | 3.30  | 3.30  |