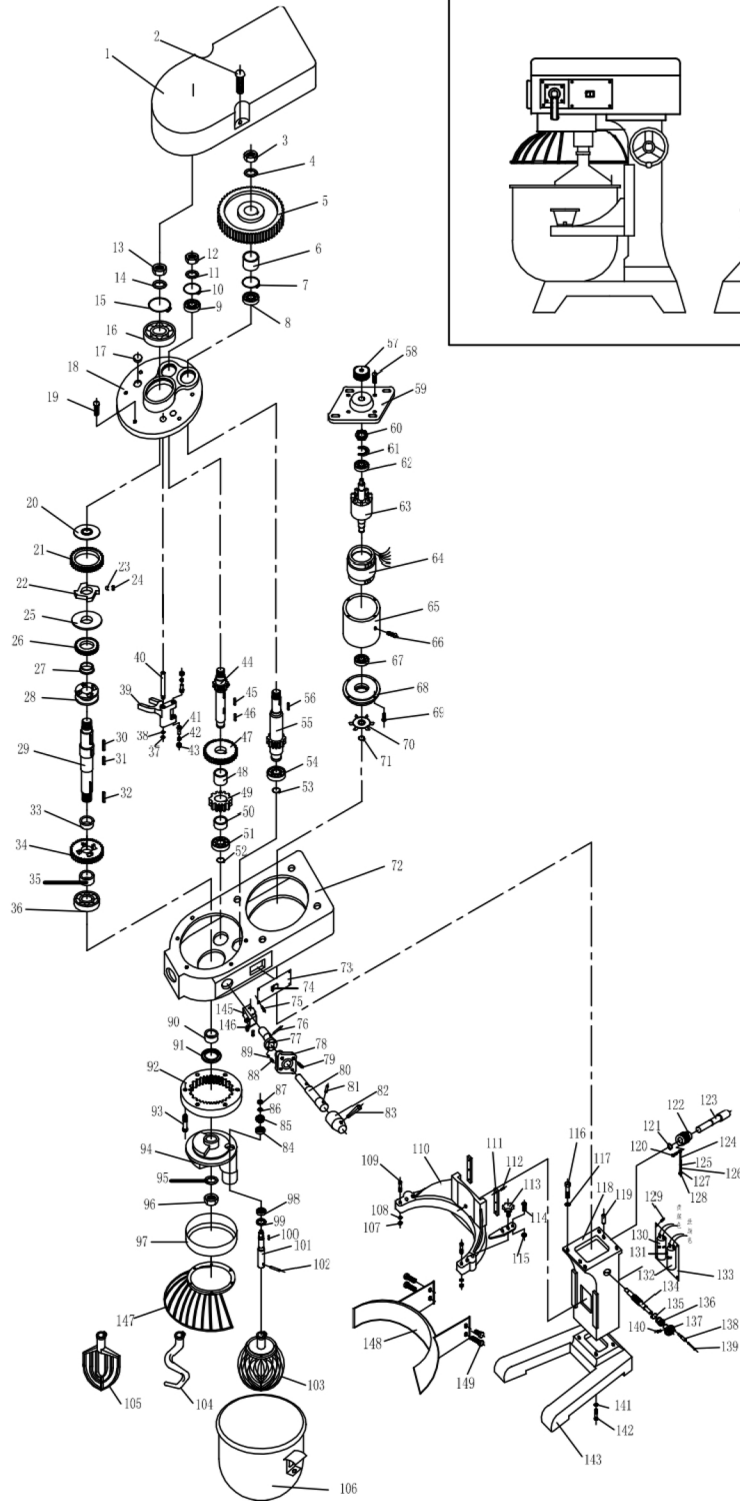
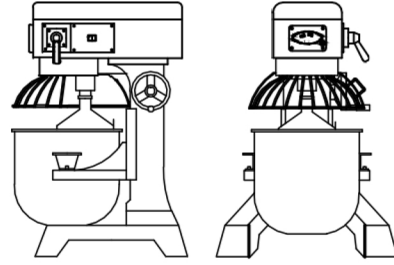


B30C STIRRING MACHINE



	Name	Drawing number	Amount
1	Box cover	B30C-0054	1
2	Screw M6X90	GB70	2
3	Nut M12	GB6170	1
4	Washer 12	GB98	1
5	Synchronous belt wheel	B30C-0018	1
6	Spacer Sleeve	B30C-0012	1
7	Circlip for hole D35	GB893	1
8	Bearing 6003	GB/T276	1
9	Bearing 6003	GB/T276	1
10	Circlip for hole D35	GB893	1
11	Washer 12	GB97	1
12	Nut M12	GB6170	1
13	Nut M16X1.5	GB6176	1
14	Washer 16	GB/T97	1
15	Circlip for hole D47	GB893	1
16	Bearing 6204	GB/T276	1
17	Oil-Hde Cover		1
18	Box cover	B30C-0019	1
19	Screw M5X25	GB70	3
20	Cam Splint	B30C-0020	1
21	Gear Rim Z=52	B30C-0023	1
22	Cam	B30C-0021	1
23	Leaf Spring	B20B-029	4
24	Cylindrical roller 8X16	B20B-028	4
25	Cam Splint	B30C-0022	1
26	Gear Z=31	B30C-0025	1
27	Sliding Collar	B30C-0024	1
28	Conjugant	B30C-0026	1
29	Output shaft	B30C-0030	1
30	Dowel 6X16	GB1096	1
31	Dowel 6X35	GB1096	2
32	Dowel 6X50	GB1096	1
33	Sliding Collar	B30C-0024	1
34	Gear Z=45	B30C-0025	1
35	Spacer Sleeve	B30C-0031	1
36	Bearing 6205	GB/T276	1
37	Nut M10	GB/T41	1
38	Ring Washer 10	GB/T-93	1
39	Shift Fork	B30C-0027	1
40	Fork Shaft	B30C-0028	1
41	Fork contact	B30C-0053	2
42	Spring	B30C-0051	2
43	Regulating Nut	B30C-0052	2
44	Second Motion shaft Z=14	B30C-0017	1
45	Dowel 6X15	GB1096	1
46	Dowel 6X20	GB1096	1
47	Gear Z=35	B30C-0014	1
48	Spacer Sleeve	B30C-0015	1
49	Gear Z=21	B30C-0016	1
50	Spacer Sleeve	B30C-0013	1
51	Bearing 6003	GB/T276	1

	Name	Drawing number	Amount
52	Snap Spring d17	GB894	1
53	Snap Spring d17	GB894	1
54	Bearing 6003	GB/T276	1
55	Inputshaft Z=14	B30C-0011	1
56	Dowel 5X25	GB1096	1
57	Synchronous belt wheel	B30C-0010	1
58	Screw M6X30	GB818	4
59	Motor flange		1
60	Centrifugal Switch		1
61	Bottom Plate		1
62	Bearing 6205	GB276	1
63	Rotor		1
64	Stator		1
65	Motor shell		1
66	Fastening screw M6X15	GB78	1
67	Bearing 6205	GB276	1
68	Bake Cover		1
69	Screw M6X30	GB818	4
70	Motor Fan		1
71	Snap Spring d15	GB894	1
72	Case	B30C-0009	1
73	Label		1
74	Switch		1
75	Screw M4X6	GB/T818	6
76	Conical Pin 4X20	GB/T117	1
77	Knee-Piece	B30C-0050	1
78	Locating Cover Plate	B30C-0048	1
79	Screw M6X14	GB/T818	4
80	Hinge Pin	B30C-0049	1
81	Conical Pin 4X25	GB/T117	1
82	Locating Sleeve	B30C-046	1
83	Shift lever Handle	B30C-0047	1
84	Bearing 6204	GB/T276	1
85	Planetary Gear Z=18	B30C-0033	1
86	Washer 10	GB/T95	1
87	Nut M10	GB/T41	1
88	Positioning Spring	B30C-0045	2
89	Steel Ball φ6	GB308	2
90	Sleeve	B30C-0065	1
91	Oil Seal 30X52X10	HG4-692	1
92	Ring gear Z=60	B30C-0032	1
93	Screw M6X25	GB/T70	6
94	Planetary Gear Holder	B30C-0035	1
95	Washer 16	GB/T97	1
96	Nut M16	GB/T6170	1
97	Ring	B30C-0036	1
98	Bearing 6005	GB/T276	1
99	Oil Seal 25X50X10	HG4-692	1
100	Dowel 5X15	GB96170	1
101	Planetary Gearshaft	B30C-0034	1
102	Straight Pin 10X30	GB/T117	1

	Name	Drawing number	Amount
103	Stirred ball	B30C-0058	1
104	Dough mixer	B30C-0056	1
105	Agitator	B30C-0057	1
106	Charging barrel	B30C-0059	1
107	Nut M8	GB96170	2
108	Ring Washer 8	GB/T-93	2
109	Anchor Pin	B30C-0060	2
110	Barrel Holder	B30C-0003	1
111	Flat Clamp	B30C-0040	2
112	Screw M6X16	GB5780	6
113	Locking Pin	B30C-0035	2
114	Screw M6X20	GB5780	2
115	Washer 6	GB/T97	2
116	Screw M10X35	GB70	4
117	Ring Washer 10	GB/T-93	4
118	Guide pillar	B30C-0002	1
119	Straight Pin 8X16	GB/T119	2
120	Screw hook	B30C-0007	1
121	Snap Spring d17	GB894	1
122	Lifting gear z=40	B30C-0005	1
123	Lifting worm shaft	B30C-0004	1
124	Lifeing Hook	B30C-0008	1
125	Washer 10	GB98	1
126	Spring	B30C-0063	1
127	Washer 10	GB98	1
128	Nut M10	GB96170	2
129	Screw M4X8	GB/T818	4
130	Capacitor 1500F		1
131	Screw M6X15		1
132	Capacitor 200F		1
133	Plate	B30C-0062	1
134	Worm Shaft	B30C-0006	1
135	Snap Spring d30	GB894	1
136	Sleeve	B30C-0041	1
137	Handwheel	B30C-0042	1
138	Hand wheel handle	B30C-0044	1
139	Core shaft	B30C-0043	1
140	Screw M6X16	GB/T818	1
141	Spring Washer 10	GB/T-93	4
142	Screw M10X45		4
144	Footing	B30C-0001	1
145	Micro switch		1
146	Screw M4X25		2
147	Protective guard		1
148	Fixed crash barrier		1
149	Screw M4X25	GB/T70	4